

# ***XPANDER***

EXPAND YOUR POSSIBILITIES



**MITSUBISHI  
MOTORS**

Drive your Ambition











### A REFRESHING EXPERIENCE FOR ALL.

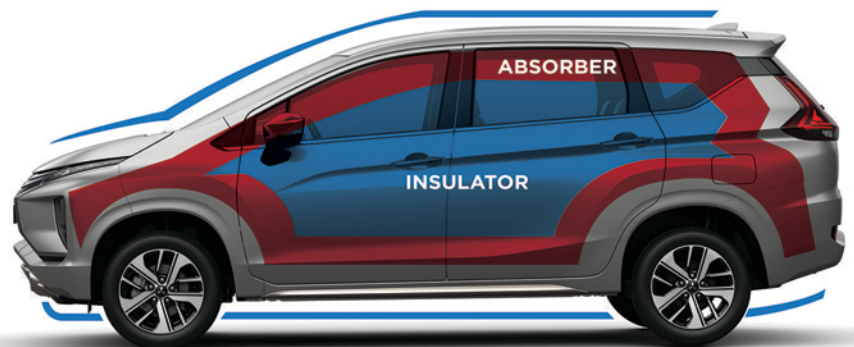
The spacious interior will provide comfort for all passengers. Supportive seating for 7 adults, convenient amenities, refined materials and modern styling all contribute to driving pleasure.



Touch Screen Display can be install upon customer request. (\*Charges may applied)

### Quiet and relaxing

The ride is supremely quiet because the passenger compartment is surrounded by special material that effectively absorbs sound and vibration.



### Cool and refreshing

Even in hot weather, the air conditioner keeps everyone cool. There are 8 fan adjustment levels in front and 4 in back, as well as 4 rear roof vents that spread the cool air evenly.





7 Seater



6 Seater



4 Seater



5 Seater



2 Seater



4 Seater

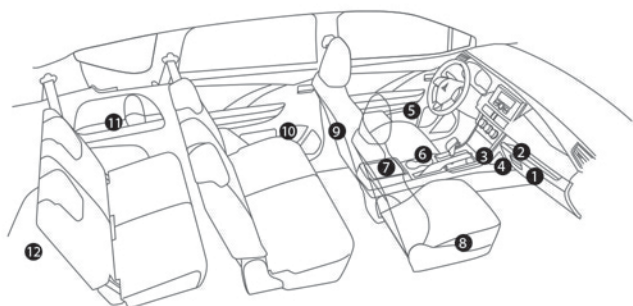
### Flexible seating

The seats can be configured to meet changing needs. Second and third seats can be folded fully flat for easy loading and the second armrest can be folded down to make room for lengthy loads.





**Your every need is accommodated.**



### Power outlets for all passengers

A total of three 12V power outlets, one in each row, are provided so every passenger can charge a smartphone or other device. For convenience, each outlet has a neighboring storage space.



### Luggage space

Luggage space is sufficient even when passengers are in the third row seats.

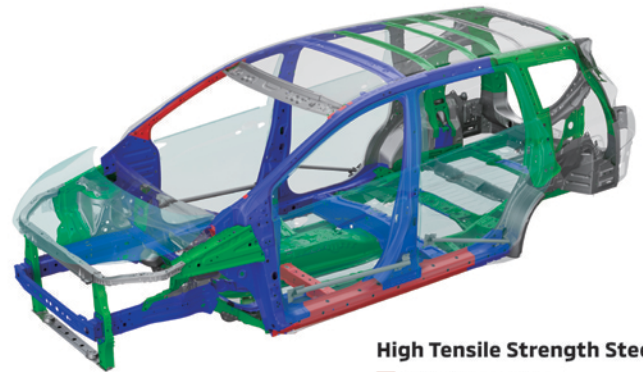


## PUT YOUR MIND AT EASE.

The Xpander offers superb protection for you and your passengers. Advanced safety features and solid body construction provide protection in the event of an accident.

### RISE body

Collision safety performance is significantly enhanced by Mitsubishi Motors' RISE (Reinforced Impact Safety Evolution) body, which efficiently absorbs energy and maintains high cabin integrity in the event of a collision.

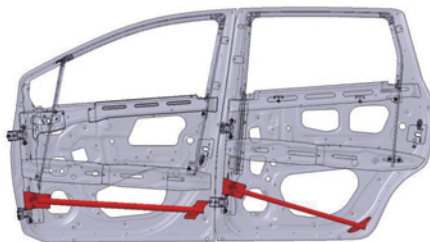


#### High Tensile Strength Steel

- 980 MPa class
- 590 MPa class
- 440 MPa class

### Side impact door beams

All 4 doors are equipped with a support beam that increases passenger protection by helping to reduce door deformation in the event of a side collision.



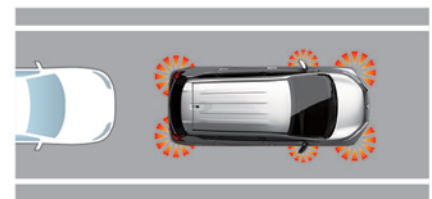
### Driver and passenger airbag system

In the event of a collision, front SRS airbags protect you and the front passenger by absorbing the force of impact.



### Pretensioners

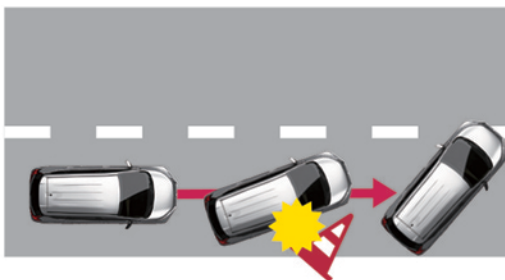
Pretensioners on the front seatbelts automatically tighten the belts in the event of a frontal collision to restrain the driver and front passenger and reduce the force of impact when the front airbags are deployed.



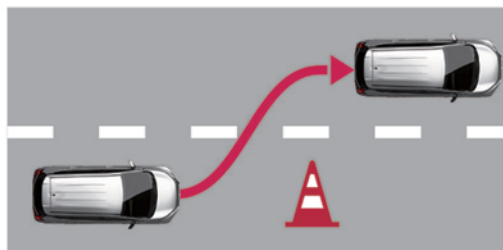
ESS is activated

### Emergency Stop Signal system [ESS]

When the driver brakes strongly or activates ABS, the hazard lights automatically flash to warn drivers in vehicles behind you and prevent a rear end collision.



Without ABS



With ABS

### Anti-lock Brake System [ABS]

ABS can keep the driver in control of the vehicle when braking on slippery surfaces by preventing the wheels from locking up.





### Position Lamps

The position lamps, arranged in crystal-like blocks, stand out with a high-quality, futuristic design.



### Tail Lamps

Separated L-shape LED tail lamps and brake lamps. Tailgate lamps also illuminate.



### Front Grille **New**

Chrome Painting + Smoke Coating



### Side Lamps



### 16" Alloy Wheel **New**



### Welcome Light

If you have trouble finding the Xpander in a crowded parking lot at night, simply activate the keyless entry system. Press the keyless entry key and the position lights will turn on for 30 seconds lead you to the right direction (only when the light switch is OFF).



### Shark fin antenna **New**



**205mm\***

\*When 16-inch wheels are mounted

### High ground clearance

When the road is rough or flooded, you can handle it with confidence knowing that the minimum ground clearance (with 16-inch wheels) is excellent for this class.

## EXTERIOR COLORS



Sterling Silver Metallic



Quartz White Pearl



Jet Black Mica



Red Metallic



Graphite Gray Metallic **NEW**





MODEL YEAR - 2020	
Drive system	2WD 4AT
ENGINE	
Type	1.5 L
Max output (EEC net)	77/ 6000
Max. torque (EEC net)	141/ 4000
Fuel type	Unleaded Gasoline/RON 90 & over
Fuel system	ECI-MULTI
Fuel Tank Capacity	45 liters
TRANSMISSION	
Type	1.5-liter 16-valve DOHC (4191 4 Cylinder)
BRAKES	
Front	Ventilated discs
Rear	Drum
PERFORMANCE	
Max.speed	160 km/h
Min.Turning radius	5.2 m
DIMENSIONS & WEIGHTS	
Overall length	4475 mm
Overall width	1730 mm
Overall height	1700 mm
Wheelbase	2775 mm
Min. Ground Clearance	205 mm
TIRES and WHEEL	
Front and Rear	205/55R16 16-inch alloy wheels
SUSPENSIONS	
Front	MacPherson strut & stabilizer
Rear	Torsion beam

#### Official Dealer

#### Car Price

\*Specifications may change without prior notice. Specifications shown may vary from actual unit. Please contact sales department to verify all information.\*



#### MM Cars Myanmar Limited

##### Yangon Address:

1A/2, Bayint Naung Rd & Ywarma Kyaung Rd Corner, HlaingTownship, Yangon.  
Hotline: 09-260 902 943, Landline: 01-514 522, 01-530 174

##### Mandalay Address:

62nd Street (Between 40th Street & 41st Street), Mahar Aung Myay Township, Mandalay.  
Hotline: 09-456 005 573, 09-456 005 574